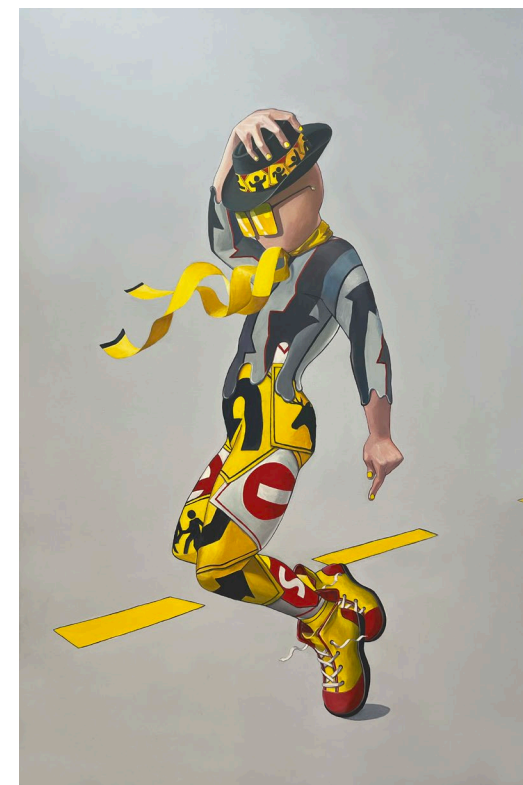




Art @ SCP

June 6 - October 12, 2023



Artists

Catherine Richardson
Denise Ward
Donavan
Erik Castro
Hugh Livingston
Jon Klein
Jonah Ward
Lisa Beerntsen
Molly Perez
Nick Taylor
Shoji Uemura
Tony Speirs

Curated by Vicky Kumpfer

431 E. Street, Santa Rosa, CA

◆ **Opening Reception**
Thursday, June 6 3-6 PM

◆ **Closing Reception**
Saturday, Oct. 12 1-4 PM

Email art@sonomacleanpower.org to
arrange a tour.

 **Sonoma
Clean Power**

About the Artist

CATHERINE RICHARDSON

My work is inspired by experiences of displacement and looking for a sense of belonging in diverse landscapes: California, Peru, England, Ireland, France, and Iceland. These experiences inform my expression, allowing paintings to evolve as a visual narrative.

These 3 pieces consider the threat of melting ice caps in the polar regions and show the stark and magnificent beauty of ancient ice.

My artwork is layered with imagery, texture and colour that reflects observations of place and its land forms. My engagement with pressing global issues, such as the changing conditions in the Arctic, serves as tangential sources of motivation allowing my work to serve as a means of exploring and addressing important environmental themes.

Catherine grew up in England and attended Art College near London for her BFA., moving to Sonoma County in 1998.

After graduating with an MFA from John F Kennedy University, Berkeley Annex, Ca., Catherine was grantee of the Sonoma County Emerging Artist Award 2005 for her Marsh Road Project, the study of the Estero on the Dillon Beach Road in Valley Ford.

In 2018 her Ice Project work won a First Prize award from "Visions Of Science" exhibition at Bath Edge Arts, University of Bath, England with imagery of explorations into changing conditions in the Arctic circles. She has been awarded artist residencies; Pt Reyes, Ca; Laugarvatn Iceland; Cill Rialaig Ireland and most recently, Skaftfell East Iceland.

Contact
707-696-4486

Healdsburg, California



Catherine Richardson



Flo Berg

Limited edition digital print from
a collage
28"x42"x1.5" Framed
\$875

About the Artist

DENISE WARD

Denise Ward is a metal artist of color, art instructor, who lives in the beauty of Sonoma County.

For over 30 years, Ward has designed jewelry which has been featured in crafts galleries, shows and museums. Her jewelry work is currently sold at Petaluma Arts Center and Museum of Sonoma County. Ward has also presented artists in conversation for Petaluma Blacks for Community Development. She is currently curating an exhibition for Petaluma Arts Center, BLACK ARTISTS OF NORTHERN CALIFORNIA, July 18 - 24 August, 2024.

Her work is kinetic sculpture and jewelry design. Ward has worked with the John F. Kennedy Center for the Performing Arts on special projects: Alvin Ailey American Dance Theater and other programs presents there. Her work is currently at Santa Rosa City Hall Council Chambers, and galleries in Healdsburg and Las Lagunas Gallery in Laguna Beach.

Contact
wardworksart.com
707 347 9522

Petaluma, California



Denise Ward



Title: *Duniya (The World)*
Aluminum sheet, steel wire, low
VOC acrylic paint
28"x48"
\$900

About the Artist

Donavan

"My work lives at the intersection of science, religion, politics, fashion, culture, society, nature and human nature—it's an interesting place to be."

Donavan is a self-taught painter who developed his style at an early age to document and journal human body language and interaction, to better help him understand and communicate in his daily world.

After 27 years in corporate advertising with a client list that includes: Vanity Fair, Levis, HBO, Mattel, Disney, HP, Adobe, Kikkoman, Sunsweet and many more... He left corporate America to pursue his childhood style of recording and observing human interaction.

Donavan owns Oli Gallery in downtown Guerneville where he paints most of his works.

Contact
415-298-1642
d@oligallery.com

Guerneville, California



Donavan



Title: *Nomad*
Acrylic on canvas
72"x48"
\$7,500

About the Artist

ERIK CASTRO

Erik Castro is an award-winning photojournalist with multiple National Press Photographers Association Awards for his multimedia work, wildfire coverage and for his year-long homeless project, BROKEN. He regularly produces photography and short films humanizing complex issues for nonprofits that serve individuals experiencing issues such as homelessness, food insecurity and housing struggles.

Castro also has extensive experience covering the California wine industry as a regularly contributing photographer for the San Francisco Chronicle and from creating all the photography for a book about a group of influential winemakers titled, "The New California Wine" published by Penguin Random House.

Contact
707-508-8743
castro.erik@gmail.com

Santa Rosa, California



Erik Castro



HARVESTER: A Portrait of Immigrant Labor

Jose Galaviz, 62, Nayarit, Mexico

Luis Alberto, 30, Michoacán, Mexico

Lorenzo Carrasco, 40, Oaxaca, Mexico

Sylvia Elizza, 32, Oaxaca, Mexico

Raymundo Gutierrez, 42, Oaxaca, Mexico

Digital inkjet prints on matte paper

24"x36"

\$1,500 each

About the Artist

HUGH LIVINGSTON

I create immersive sound and visual environments for public spaces. My site-specific work is anchored in annotation and analysis as methodologies for experiencing the natural world through the visual and auditory senses. I use found sounds, colors extracted from nature, patterns and textures reassembled and reexamined, to tell a new story about our ecological surroundings. I make experiential portraits of environments through various immersive means, aspiring to de-emphasize the technology of delivery in favor of poetic experience.

I employ the term video sculpture to describe use of raw materials such as photographs and animated shapes to feed algorithms that improvise new conglomerations of the component elements: a dynamic sculptural generation of unlimited variety.

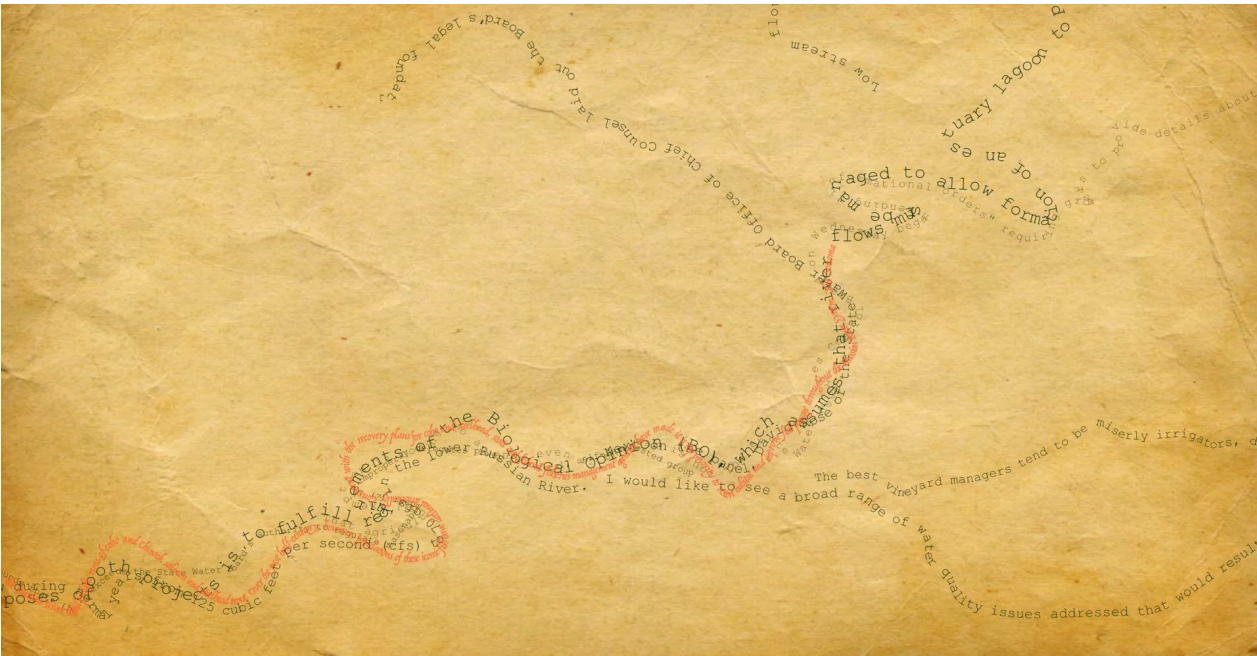
Hugh has a long association with artmaking along the Russian River, with multiple projects at the SlaughterhouseSpace, the Sonoma County Museum, Hammerfriar Gallery, Harmon Guest House, and with the Chalk Hill Artists' Residency at Warnecke Ranch, where his opera Stages of the Russian River, written with Fred Euphrat, was produced. His recent work includes an immersive sound experience at Bell Mountain, focusing on the regenerative agricultural processes of Medlock Ames Winery. He has a gallery in Healdsburg, Livingston Projects @Loft120.

Contact
510-205-4844
livingstonsound.weebly.com

Healdsburg, California



Hugh Livingston



Rivertext, 2011, rev. 2024

Government agencies generate verbiage. About the river but not of the River. They rarely say the River is a beautiful place. Words are washed down the River and out to the sea. Away with words, the poet might say. The feeder creeks of the Russian River watershed are depicted. Riverflows are indicated with speed and size of text. It tumbles along, gathers energy, tells stories. Pink salmonids swim upstream. An artistic approach to data visualization and our place in the natural environment.

Digital animation software, found text
Dimensions variable
\$2,500

About the Artist

JON KLEIN

I grew up in the hills near Willits, CA, with my parents, siblings, and various pets, living in a series of different ramshackle cabins, tents, and an old white school bus that had two Volkswagen van bodies welded to the top to make an extra floor. My parents completely neglected to send me to school, but they did use some money from a successful marajuana harvest to help me buy a good camera when I was nine years old. From then on I spent much of my time roaming the woods looking for interesting wildlife to photograph.

As a young adult I moved to the Mendocino Coast to be closer to the ocean, and started photographing coastal landscapes and macro subjects in addition to wildlife. Around that time my prints began selling well enough that I was able to make a full time business from my photography.

Currently I live in a normal wooden house near Fort Bragg, CA, with my wife, our young child, a dog, a vegetable garden, and a puddle with goldfish.

Contact
707 962 3033
www.jonkleinphoto.com

Fort Bragg, California



Jon Klein



Dragonfly with Raindrops

Photograph
28"x38"
\$530

During an unusual summertime drizzle, I went to Lake Ida Rose near Willits, CA, to look for dragonflies. I found this female variegated meadowhawk perching on a dead star thistle on the earthen dam. Every few minutes it would shake the water off its wings, but it didn't fly.



Dewdrops on Web

Photograph
21"x38"
\$395

One foggy fall morning in the hills west of Willits, CA, I noticed these dewdrops suspended on spider web between two yarrow stalks. The droplets were unusually large, and each one acted as a lens for the scene behind. If you look at the picture upside down, you can see a tiny image of the hills in each drop.

About the Artist

JONAH WARD

Artist Jonah Ward was born on August 31, 1984 atop Foster Mountain in Willits, California. There he was raised on a historic homestead at the end of a red dirt road and educated in a one-room schoolhouse until attending Willits high school. Jonah was accepted to The California College of the Arts in 2002 and graduated from the glass department in the fall of 2006 where he developed his signature series, Glass Burned Panels. He now splits his time between his art studio at his home in Vallejo, CA and his family's property in Willits, CA where he is continuously inspired to create new artwork from the natural materials that surround him there.

Jonah has chosen a diptych for display which he created by using hand-milled Ponderosa Pine slabs from his property outside of Willits, CA. He has used his unique process of burning in lines with molten glass to pay tribute and celebrate the natural grain, color, and texture of the wood. The imagery reflects the surroundings in which the tree grew, and the blue/gray stain present in the wood from a fungus represents the tree's ultimate demise due to bark beetles. Jonah is captivated by the balance between destruction and creation, and how they are inextricably intertwined. He hopes this work inspires its viewers to make a deeper connection to nature.

Contact
jonah@jonahward.com
www.jonahward.com

Willits, California



Jonah Ward



Burnt Panel Diptych No. 70

Glass burned hand milled Ponderosa Pine
42" x 102"
\$7,000

About the Artist

LISA BEERNTSEN

Lisa Beerntsen lives and paints in Graton, California. She and her husband, fellow artist Tony Speirs moved to Sonoma County from the East Bay in 2002.

Lisa got her MFA from the University of Massachusetts, Amherst in 1991, and her BFA from California College of Arts & Crafts (now CCA) in 1983. She has exhibited her paintings on both coasts, recently at Arches Gallery in Healdsburg, & previously at HANG & Meridian Galleries in San Francisco.

Lisa has been an adjunct art instructor at the Santa Rosa Junior College for over 10 years, where she teaches classes in color, painting & drawing. She has previously taught courses at the San Francisco Art Institute, California State University, Stanislaus, & the Universities of Maine & Massachusetts.

One of her recent bodies of work is characterized by underlying abstract forms, color, and movement, overlaid with patterns culled from diverse cultures (Islamic, Celtic, Tibetan, American quilters'...), & images of plant and flower forms. Some paintings also include collage, from a variety of sources; many of the recurrent designs are from stamp blocks she carves herself. An avid gardener, she is much inspired by the changing colors & light of nature. She moves easily between different modes of painting, from realistic to abstract.

Lisa also recently collaborated with Tony Speirs and the collective of artists 'Art Farm Motel' on several very large-scale painting-installation projects for the Burning Man Art Festival.

Contact
707-318-9918
lisabee@sonic.net

Graton, California



Lisa Beerntsen



(a)



(b)



(c)

(a) Continuous Revision
(b) Plants & Pattern Series #2
(c) Plants & Pattern Series #3

Acrylic/mixed media
22"x30"
\$985 each

About the Artist

MOLLY PEREZ

My mother supervised exhibitions for Contemporary California Native American Art, so my studies began early.

I received a split emphasis degree in sculpture and painting from Cal State Chico. The majority of my studies there were spent in the sculpture department, but I was restless and left before completing school.

My process begins with salvaging material. I collect discarded books, newsprint, wallpaper and scrap books; some of which contain century old paper. I rip, tear and cut each piece deliberately. I work intuitively with an immediate and raw quality.

I'm fascinated with artists considered 'primitive' or 'outsider'. I have awed their ability to create work with a sincere desire and visual language of the soul.

In 2007 I acquired a shared studio and gallery in Santa Rosa. For seven years I focused on developing and selling my work and hosting events. I began showing with Place Contemporary (Seattle based Gallery) in 2010 reaching art collectors in New York and Seattle via AAF (Affordable Art Fair). I have participated in commissioned projects in Seattle, Taos, and locally. I have work in Collage Museum in Santa Fe created & curated by artist Cecil Touchon. My wholehearted objective is to reach people in my community to further my pursuit of art making.

I share a business in Healdsburg, JAM JAR. It grew from my working studio and collaboration with business partner & life long friend Jaime Jean. We have been in business for over a decade selling our own work and representing local makers and others from around the country. Because of the support from our amazing community we have been able to continue & impart our love of art and the handmade in spite of fires, floods, and pandemic.

Contact
707-480-8506
jamjargoods@gmail.com

Santa Rosa, California



Art @ SCP



Molly Perez



For Earth and Sky

Collage, mixed media, on paper,
framed under glass
35"x28"
\$3,200

About the Artist

NICK TAYLOR

My work is a manifestation of the energies that exist within me as I search to understand the life I lead, and that which exists around me. They reflect my strengths and weaknesses at the time they were created.

The native/natural world I have spent my entire life being a part of is an overarching factor in the organic appearance of my work and is one of the few environments where I always find beauty, calm and a sense of order.

These works are created using salvaged materials that are forged, welded, and then ground into a finished sculpture.

The finished work rarely looks like what I first had in mind. It is a discovery process, and the final piece is always a revelation of what is within.

Contact
Nick@JNickTaylor.com
707-964-2358

Fort Bragg, California



Nick Taylor



Koo Koo
Steel
29" x 27" x 18"
\$12,000



Eden
Steel
16" x 13" x 6"
\$7,000



Art @ SCP

About the Artist

SHOJI UEMURA

Shoji was born in Japan, graduated from Tokyo University with a degree in Art. He traveled to the US in 1988 to produce an art installation on the Utah Salt Flats. (shown here) He did similar installations in Japan and Australia.

Shoji's work reflects his love of the materials and process. He uses natural and man-made materials and enjoys the contrast of hard shiny medals with soft rice paper, clay and straw. For Shoji his process is going inward, a meditation with an outcome of something beautiful using a repeated action of mark making, a kind of "marking time meditation".

The tile work process you see here is quite intriguing. They are made of a clay/concrete mixture with mineral pigments. The process starts with a slurry of colored clay/concrete poured onto a sheet of plexiglass. When it is leather hard he incises the material to make the surface design, then another color is poured to fill the space of the incisions. The design is worked from the back side with some distressing done later on the front. This work is inspired by the natural clay and bamboo walls of ancient Japan.

Contact
707-477-0567
vkumpfer@gmail.com

Santa Rosa, California



Shoji Uemura



E'poon #10
Clay/Cement
\$800

E'poon #20
Aluminum/Clay
\$1,200

E'Poon #17
Clay/Cement
63"x16"
\$1,900



Art @ SCP

About the Artists

TONY SPEIRS & LISA BEERNTSEN

"Los Dos" is the collaborative painting project of Tony Speirs and Lisa Beerntsen, two Sonoma County artists. It was conceived in 2013 in San Miguel de Allende, Mexico, and has continued off and on since then, culminating with a gallery showing of over a dozen large works at Sofie Contemporary Arts in Calistoga in Spring of 2021. Previously, the two had collaborated with an additional friend, east Bay artist Bob Stang (collectively known as B.L.T.)

Tony and Lisa have lived and worked in Graton, CA since 2002.

Tony originally studied illustration at the SF Academy of Art, though he has worked primarily as a fine artist since the late 80s. He has exhibited widely throughout the Bay Area, as well as New York, Texas and beyond. He maintains a studio at Fulton Crossing, as well as at home in Graton. His "Portrait of 'X' (School Shooting Survivor)" was recently featured in the DeYoung Museum Open.

Lisa received an MFA from the University of Massachusetts, Amherst and a BFA from the California College of Arts & Crafts in Oakland. She has taught in the Art Department at the Santa Rosa Junior College for 25+ years. She maintains her art studio at Atelier One, and her work is currently represented by Lori Austin Galleries (Healdsburg & Santa Rosa) as well as Oli Gallery (Guerneville & Petaluma).

Contact
lisabee@sonic.net
fallguy@sonic.net

Graton, California



Tony Speirs & Lisa Beerntsen



Oriole

Acrylic on cradled panel
32"40"
\$3,000

About the Curator

VICKY KUMPFER

I am happy to be a part of Sonoma Clean Power’s focus on supporting regional arts with their explicit interest to contribute to the community through the arts.

Along with the honor of being the curator for this exhibit, I was able to help select the artists for their Public Art in Private Development Obligation mandated by the City of Santa Rosa. You can enjoy the beautiful sculpture at the entrance of the Headquarters building. As an artist myself, I recognize the power of bringing art into our everyday life. While working for 20 years, as the City of Santa Rosa’s Public Art Coordinator, my motto was “Take it to the Streets” and we had fun with community events, exhibitions, and an annual award competition.

For the other 20 years of my arts administrative career, I have been involved with various art organizations in Sonoma County – museums, art centers, arts councils, and even phantom galleries – creating exhibition space in vacant stores and factories. I’ve had the privilege of working with many artists here in Sonoma County.

I hope you enjoy the excellent artists’ work featured in this exhibit, gracing this beautiful building!

Vicky Kumpfer
Public Art Consultant
vkumpfer@gmail.com
707-477-0567



Permanent Collection



ELEMENTALS – a wind sculpture

Jonathan Russell & Saori Ide

The 18-foot-tall sculpture features three diamond shapes representing the Sun, Water and the Earth. Adding the Wind-driven movement completes the four elements.

Low voltage LED color changing lights illuminate at night inside each of the diamond forms. The outer edge of each base also illuminates. The lights are powered by SCP’s 100% local renewable EverGreen power.

Permanent Collection

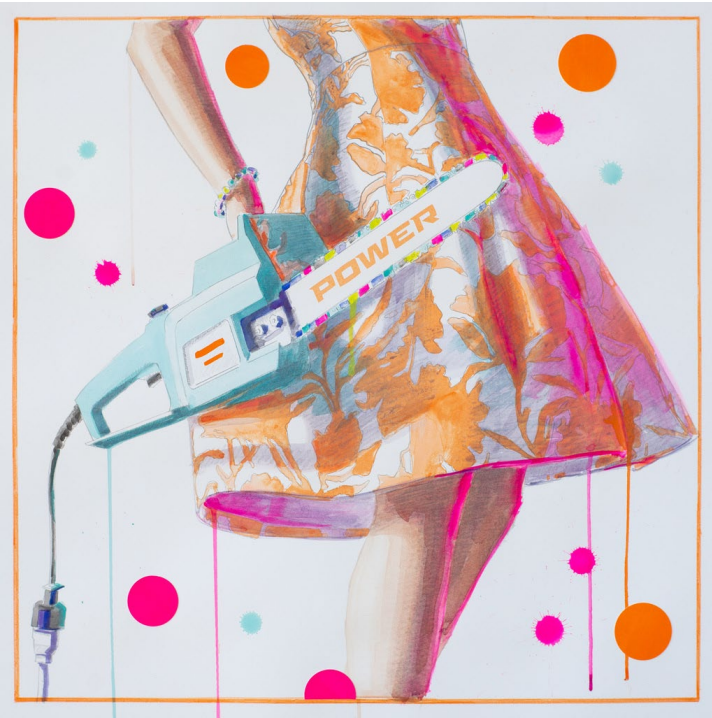


Freddie
by Jamie Luoto

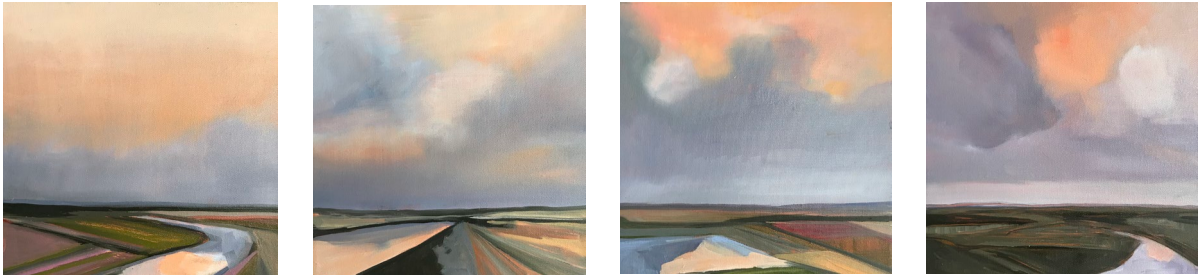


Pt. Reyes Station Barn
by Patrice Wachs

Permanent Collection

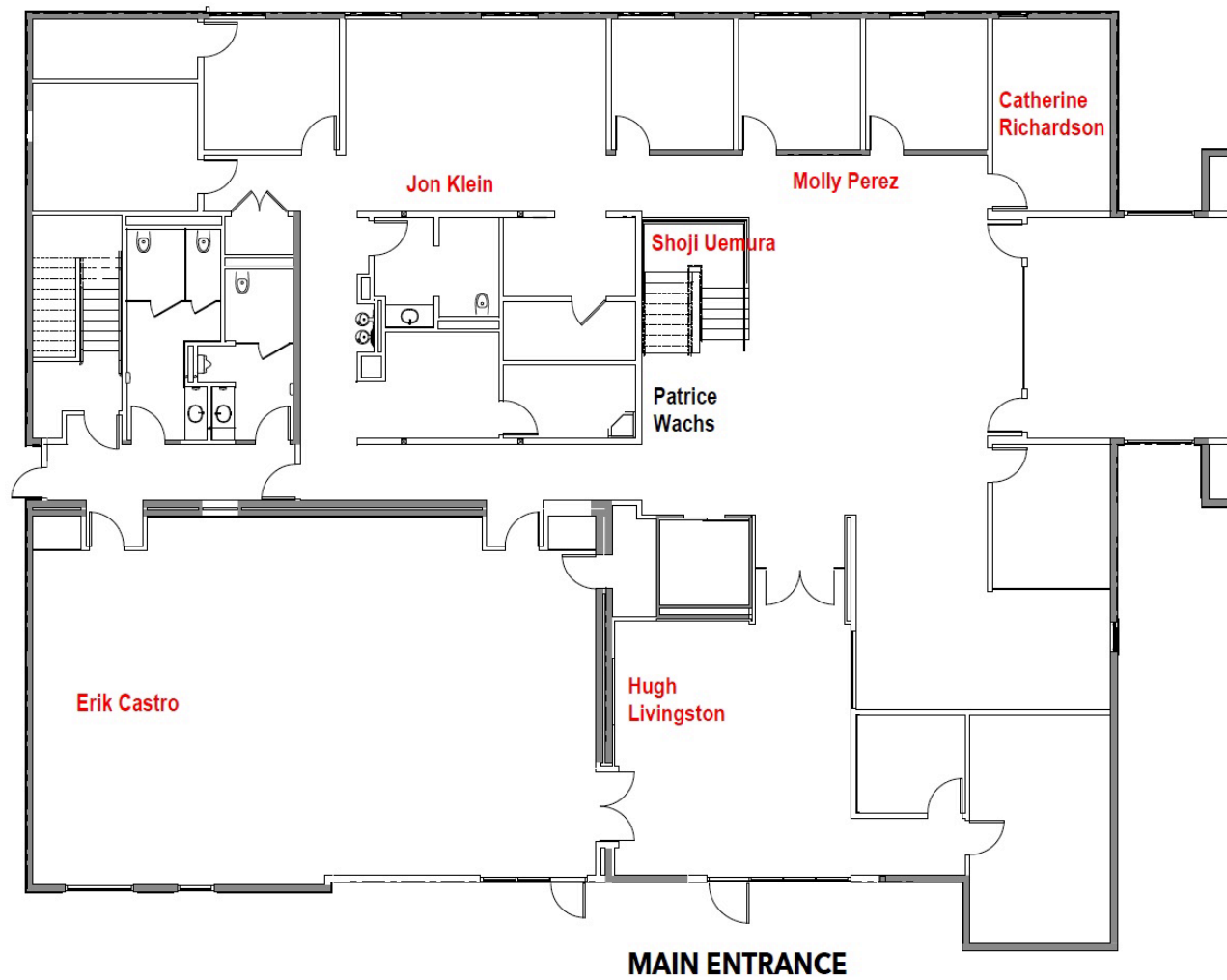


Power Player
by Kelly Reemtsen



California Dreaming Series
by Gen Zorich

First Floor



Second Floor

