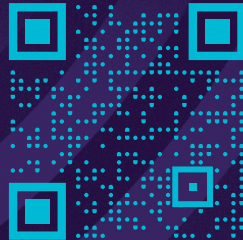


# Save Energy. Earn Rewards.

## Sign up and get \$25

Enroll to receive Alerts through Sonoma Clean Power's GridSavvy Rewards and earn \$2 for every kilowatt-hour of energy saved during hours of high electricity usage on the electric grid. There are no penalties if you don't reduce your usage, only rewards when you do! You'll also receive a [\\$25 check](#) in the mail as an enrollment bonus while funding lasts. Join the over 11,000 SCP customers who are already participating in Alerts through GridSavvy Rewards, saving energy, reducing bills, and earning rewards.

Choose to receive SCP's energy-saving Alerts via text, email, or voice call. You may unsubscribe at any time. Sign up and learn more by visiting [sonomacleanpower.org/earnrewards](https://sonomacleanpower.org/earnrewards) or by visiting SCP's Customer Center at 741 Fourth Street, Santa Rosa, CA 95404.



SCAN TO SIGN UP

Contains recycled materials, printed with soy-based ink.



P.O. Box 1030  
Santa Rosa, CA 95402

PRSR STD  
US POSTAGE  
PAID  
AD-VANTAGE  
MARKETING

# Powering Progress

Power Content Label reflects 2023 verified electric resources for SCP.

This information is required by the California Energy Commission to be mailed to any customer who received service from SCP in 2023 and/or is an active SCP customer. The generation data represents energy procured during 2023 and is provided in the "Annual Report to the California Energy Commission: Power Source Disclosure Program."

A significant portion of SCP's energy comes from clean, large hydroelectric power stations. Under California law, large hydroelectric power stations do not qualify as eligible renewable resources.

Percentages may not total 100% due to rounding.

[sonomacleanpower.org](https://sonomacleanpower.org)

2023 POWER CONTENT LABEL						
Sonoma Clean Power Authority						
sonomacleanpower.org						
Greenhouse Gas Emissions Intensity (lbs CO <sub>2</sub> e/MWh)			Energy Resources	CleanStart	EverGreen	2023 CA Power Mix
CleanStart	EverGreen	2023 CA Utility Average	<b>Eligible Renewable<sup>1</sup></b>	<b>51.2%</b>	<b>100.0%</b>	<b>36.9%</b>
<b>138</b>	<b>68</b>	<b>373</b>	Biomass & Biowaste	9.4%	0.0%	2.1%
			Geothermal	17.8%	88.1%	4.8%
			Eligible Hydroelectric	0.7%	0.0%	1.8%
			Solar	8.1%	11.9%	17.0%
			Wind	15.1%	0.0%	11.2%
			<b>Coal</b>	<b>0.0%</b>	<b>0.0%</b>	<b>1.8%</b>
			<b>Large Hydroelectric</b>	<b>35.8%</b>	<b>0.0%</b>	<b>11.7%</b>
			<b>Natural Gas</b>	<b>0.0%</b>	<b>0.0%</b>	<b>36.6%</b>
			<b>Nuclear</b>	<b>0.8%</b>	<b>0.0%</b>	<b>9.3%</b>
			<b>Other</b>	<b>0.1%</b>	<b>0.0%</b>	<b>0.1%</b>
			<b>Unspecified Power<sup>2</sup></b>	<b>12.1%</b>	<b>0.0%</b>	<b>3.7%</b>
			<b>TOTAL</b>	<b>100.0%</b>	<b>100.0%</b>	<b>100.0%</b>
<b>Percentage of Retail Sales Covered by Retired Unbundled RECs<sup>3</sup>:</b>				<b>0%</b>	<b>0%</b>	

<sup>1</sup>The eligible renewable percentage above does not reflect RPS compliance, which is determined using a different methodology.

<sup>2</sup>Unspecified power is electricity that has been purchased through open market transactions and is not traceable to a specific generation source.

<sup>3</sup>Renewable energy credits (RECs) are tracking instruments issued for renewable generation. Unbundled renewable energy credits (RECs) represent renewable generation that was not delivered to serve retail sales. Unbundled RECs are not reflected in the power mix or GHG emissions intensities above.

For specific information about this electricity portfolio, contact:

**Sonoma Clean Power Authority**  
**(855) 202-2139**

For general information about the Power Content Label, visit:

<https://www.energy.ca.gov/programs-and-topics/programs/power-source-disclosure-program>